

RESPONSE FORM

Name:

Address:

.....

.....

Tel No: Email:

Stream 1

- Please reserve a place for me on **all three** weekends of the **Crucible** course.
I enclose a cheque for £254.
- Please reserve a place for me on the **After Christendom** weekend (12th-13th November 2016).
I enclose a cheque for £93.
- Please reserve a place for me on the **Urban Challenge** weekend (28th-29th January 2017).
I enclose a cheque for £93.
- Please reserve a place for me on the **Creating New Churches** weekend (20th-21st May 2017).
I enclose a cheque for £93

Stream 2

- Please reserve a place for me on **all three** weekends of the **Crucible** course.
I enclose a cheque for £254.
- Please reserve a place for me on the **Restoring Hope** weekend (12th-13th November 2016).
I enclose a cheque for £93.
- Please reserve a place for me on the **Becoming Human** weekend (28th-29th January 2017).
I enclose a cheque for £93.
- Please reserve a place for me on the **Jesus Unplugged** weekend (20th-21st May 2017).
I enclose a cheque for £93.

Accommodation and Meals

- I would like accommodation and meals. Please send more information.
- I would like meals only. Please send more information on costs and arrangements.
- I do not require accommodation or meals.
- Please send me further information about the **Crucible course**.

Return to Crucible:

Rachel Jay PO Box 16991, Birmingham, B32 9HX (cheques payable to 'Urban Expression').



2016 - 2017
Courses

Hosted by:

Urban Expression

In partnership with:

Incarnate Network

BMS World Mission

Northumbria Community

Workshop

Pioneer Collective

ON THE MARGINS?

Christians across western culture are facing profound challenges and fresh opportunities.

The long era of 'Christendom' is coming to an end. We now live in a plural society, with multiple religious options alongside the prevailing secular assumptions, in which Christianity has lost its position of dominance and privilege and churches are on the margins of society.

Although we seem to be declining in numbers and influence, this context offers many new possibilities – if we have the courage and imagination to grasp them.

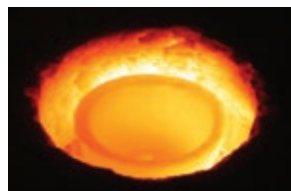
WHY THE CRUCIBLE COURSE?

Crucible is for Christians with courage and imagination, who suspect that:

- We need to operate as cross-cultural missionaries because we live in a cross-cultural mission context.
- We need to think creatively about incarnating the gospel and planting new kinds of churches in emerging and diverse cultures.
- We need to recover the biblical vision of shalom and reflect on how we live as followers of Jesus in light of this all-embracing vision.
- We need to pay particular attention to the margins, because we serve the God who frequently does new things there:
 - On the margins of society among the poor and disenfranchised.
 - At the margins of culture, where creative thinking explores new possibilities.
 - On the margins of the familiar; the spaces all around us, neglected or ignored, but full of potential.

WHAT IS A CRUCIBLE?

- A melting pot, where antiquated structures are made pliable and reshaped.
- A time when powerful political, social, intellectual or economic forces converge.
- A place where different cultures or styles can mix together and produce something new.



WHO RUNS THE COURSE?

The course was first developed by Andrew Grinnell, Juliet Kilpin and Stuart Murray Williams. Now in its eleventh year and having trained over 550 people it is hosted by Urban Expression in partnership with the Incarnate Network, the Northumbria Community Workshop, BMS World Mission and Pioneer Collective.

“The becoming fully human weekend has changed my life.”

WHAT DOES THE COURSE INVOLVE?

Crucible runs three intensive training weekends each year to equip Christians to follow Jesus on the margins. Two streams are available on each weekend. Each stream flows separately, but the subjects can be done in any combination:

Stream 1

After Christendom (12th-13th November 2016) investigates the many opportunities, as well as the challenges, that the end of imperial Christianity presents.

Urban Challenge (28th-29th January 2017) examines the dynamics of mission and ministry in our multicultural urban communities, where Christendom has faded first.

Creating New Churches (20th-21st May 2017) offers resources for pioneering new churches – and new kinds of churches – in emerging cultures, and renewing existing churches.

Stream 2

Restoring Hope (12th-13th November 2016) explores how, in light of God's mission to bring shalom to all creation, we can live towards that hope and create communities of peace.

Becoming Human (28th-29th January 2017) probes the dynamics of discipleship and asks how we can become more fully human as followers of the Son of Man.

Jesus Unplugged (20th-21st May 2017) imagines how we might re-tell the story of Jesus today in ways that connect with contemporary cultures.

PLACEMENTS

Participants will also be offered opportunities for year-long or short-term placements in various contexts – to work out in practice what they learn on these weekends.

VENUE

International Mission Centre, 24 Weoley Park Road, Selly Oak, Birmingham B29 6QX.

COST

£93 per weekend or £254 for three. Accommodation and meals are not included in the cost. You can request these on the response form, or make your own arrangements.

INTERESTED?

For further information, or to book a place, please return the response form. Or find out more at: www.cruciblecourse.org.uk or contact us at info@cruciblecourse.org.uk

“A great place to connect...people battling with the same questions.”